

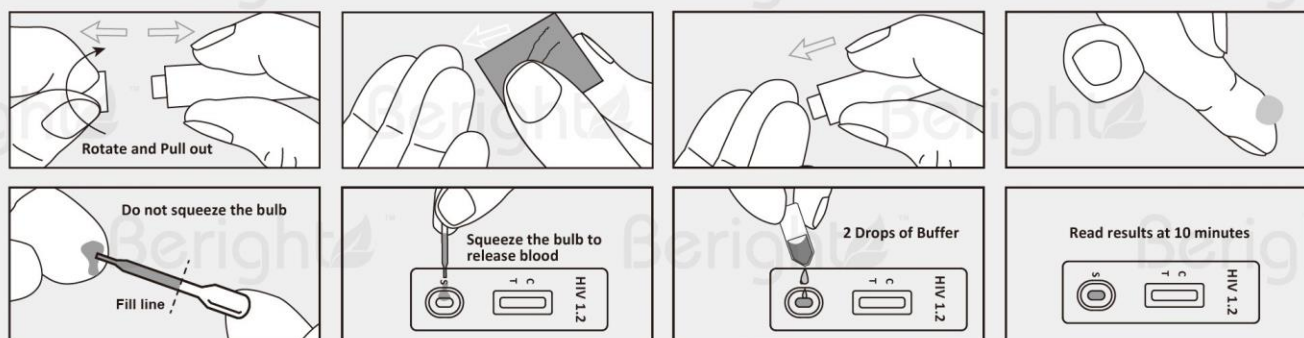
For Self-Testing Use Beright HIV Rapid Test For Reliable Human Immunodeficiency Virus Type 1 and Type 2 Diagnosis

HIV continues to be a major global public health issue. HIV / AIDS is considered a pandemic-a disease outbreak which is present over a large area and is actively spreading. The African Region is the most affected region, it accounts for almost two thirds of the global total of new HIV infections.

- **Fast:** Result in 10 minutes
 - **Easy:** Easy visual interpretation
 - **Confidential:** Can be performed in privacy
 - **Reliable:** Tested for efficacy with high accuracy
 - **All Test Components Included:** No other materials required
 - **High Accuracy:** Sensitivity : 100% / Specificity : 100%
- (IMR Ref. Number : IMR/DRC/VIRO/23/2302/11)



Convenient Procedure



Ordering Information



Cat.No.	Product Description	Specimen	Format	Pack
IHI-402H	HIV 1.2 Rapid Test (Self-Testing)	Whole Blood	Cassette	1 T

Distribute By:

